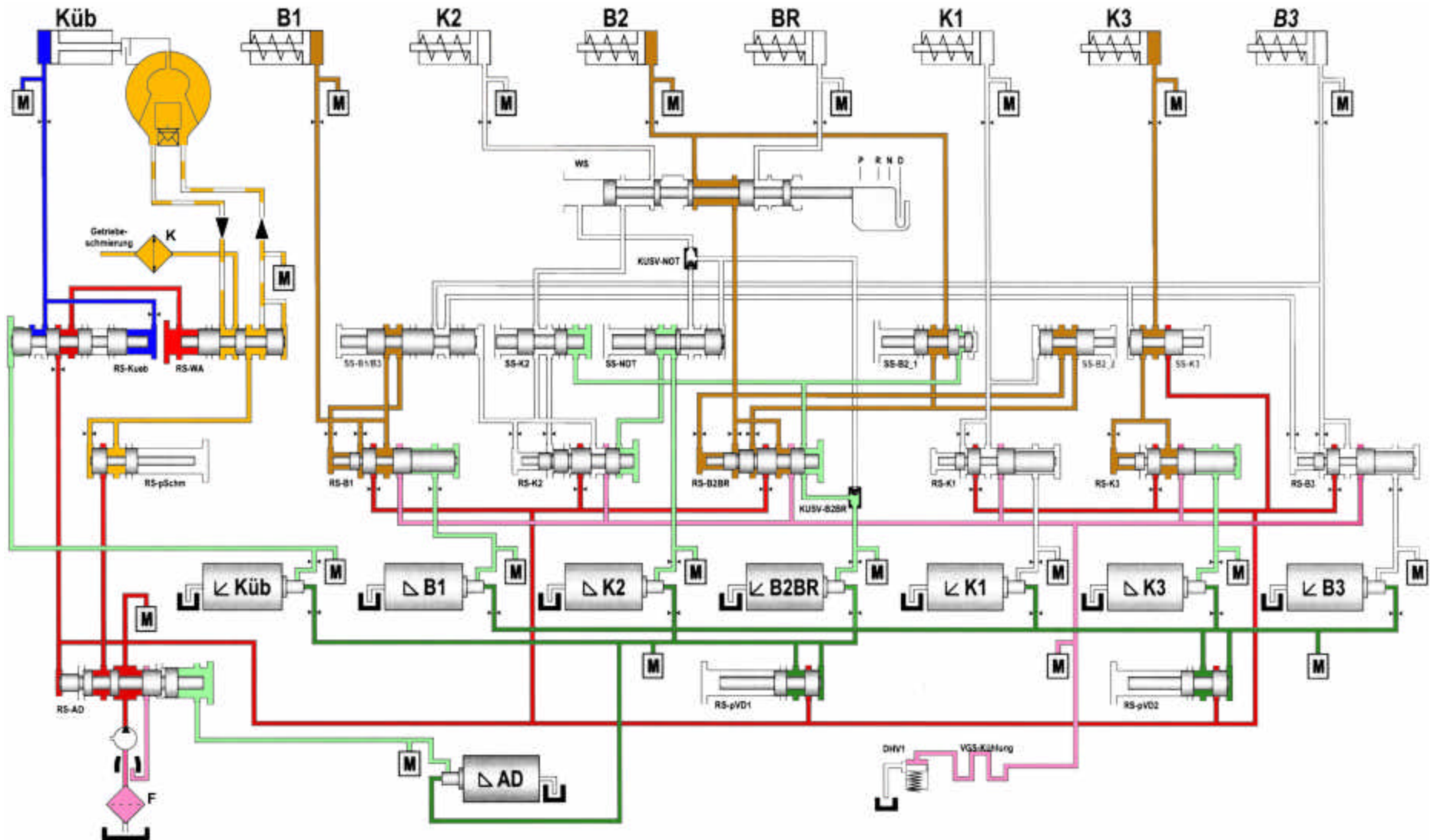


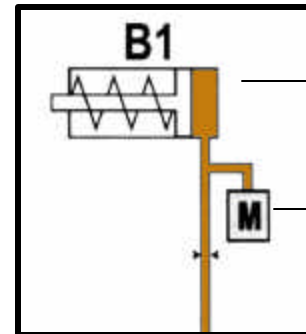
Hydraulic Diagram (Shown in 2nd Gear)



Preliminary hydraulic diagram

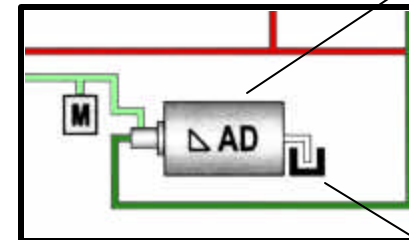
Legend

Acronym	Translated description
DHV1	Pressure hold valve
F	ATF Filter
Getriebeschmierung	Transmission lubrication
K	ATF radiator
Küb	Torque converter lock-up clutch
KUSV-B2BR	Switchover valve B2 and BR
KUSV-NOT	Limp home switchover valve
M	Messuring point for the hydraulic pressures (Factory only - sealed off with steel balls)
RS-AD	Regulation valve - Working pressure
RS-B1	Regulation valve - B 1 brakes
RS-B2/BR	Regulation valve - B2 and BR brakes
RS-B3	Regulation valve - B3
RS-K1	Regulation valve - K1
RS-K2	Regulation valve - K2
RS-K3	Regulation valve - K3
RS-Kueb	Regulation valve - TC lock-up clutch
RS-pSchm	Regulation valve - Lubrication pressure
RS-pVD1	Regulation valve - Valve supply pressure 1
RS-pVD2	Regulation valve - Valve supply pressure 2
RS-WA	Regulation valve - converter inlet pressure
SS-B1/B3	Shift valve - B1 and B3 brakes
SS-B2_1	Shift valve - B2_1
SS-B2_2	Shift valve - B2_2
SS-K2	Shift valve - K2
SS-K3	Shift valve - K3
SS-NOT	Shift valve - Limp home
VGS-Kühlung	Returning ATF cools lower surface of the ETC
WS	Selection range valve



Shift member:
B_ brake
K_ clutch

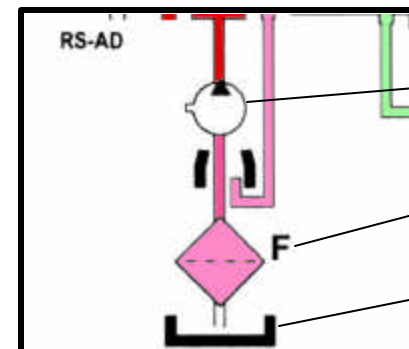
Measuring point



Solenoid valve:

△ Normally open
◁ Normally closed

Return to oil pan



Oil pump

Filter

Oil pan